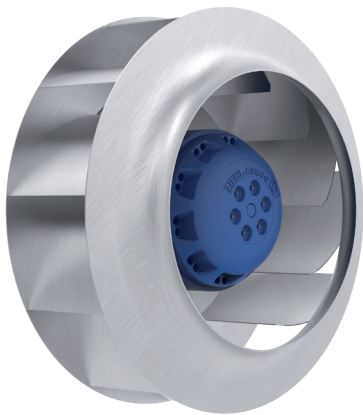


L-series

for single phase alternating current, 2 pole

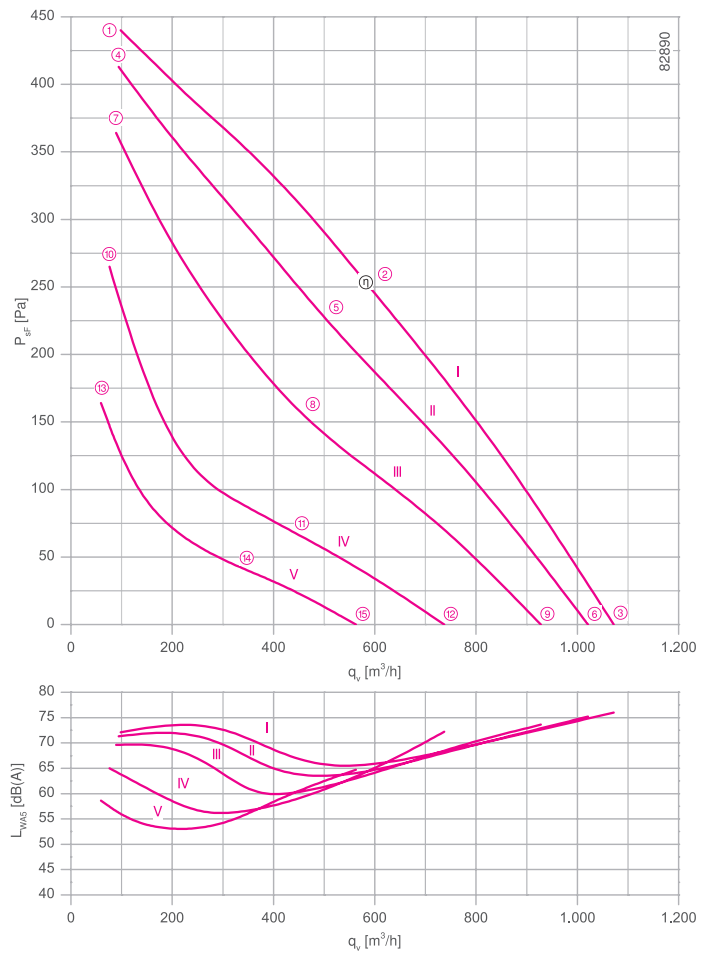
RH22L-2E



Description

Motor technology: AC
 Rated voltage U_N : 1~ 230 V*
 Rated frequency f_N : 50 Hz* (60Hz data available)
 Motor input power P_1 : 0.12 kW*
 Rated current I_N : 0.54 A*
 Rated speed n_N : 2450 min⁻¹*
 Current increase ΔI : 0 %
 Service capacitor C_{400V} : 4.0 μ F
 Thermal class: **THCL155***
 Min. permitted ambient temperature $t_{R(min)}$: -30 °C
 Max. permitted ambient temperature $t_{R(max)}$: 60 °C
 Motor protection: Thermal contact
 Impeller : High Performance Composite Material, uncoated
 Conformity: CE
ErP-data
 Not subject to ErP regulations ($P_1 < 125$ W)
 * Rated data

Characteristic curve

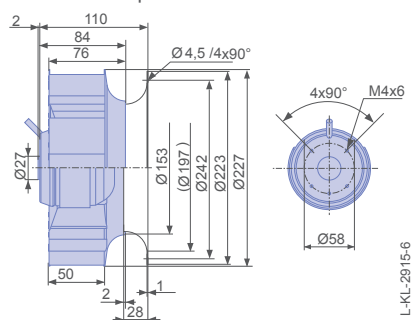


measured with inlet ring, without guard grille according to ISO 5801

- Inlet ring 00407899 Page 451
- Connection diagram 1360-177X SW Page 550
- System components Page 448

Dimensions [mm]

Free-running motor impeller RH
in installation position H/Vu/Vo



L-KL-28/15-6

Performance data

Type	Characteristic curve	Voltage	Operating point	Current	Motor input power	Speed	Suction side sound power level
		U [V]		I [A]	P _i [W]	n [min ⁻¹]	L _{WAS} [dB]
RH22L-2EP.WC.2R	I	230	①	0.42	90	2720	72
		230*	②	0.54*	120*	2450*	66
		230	③	0.46	100	2630	76
	II	200	④	0.40	80	2630	71
		200	⑤	0.54	110	2240	64
		200	⑥	0.46	90	2500	75
	III	170	⑦	0.40	65	2480	70
		170	⑧	0.52	85	1920	60
		170	⑨	0.46	75	2280	74
	IV	135	⑩	0.38	50	2110	65
		135	⑪	0.46	60	1440	57
		135	⑫	0.42	55	1820	72
	V	110	⑬	0.36	40	1670	59
		110	⑭	0.38	42	1110	53
		110	⑮	0.37	42	1390	65

*rated data

Fan ordering information

Design RH*
Installation position H/Vu/Vo
Electrical connection Supply cable variable 45cm






Type **RH22L-2EP.WC.2R**
Article no. **161616**

Weight [kg] 2.55

* Inlet ring not included

Control technology

<p>Frequency inverter Fcontrol 1~</p>  <p>➤ Page 478</p>	<p>Motor protection units 1~</p>  <p>➤ Page 526</p>	<p>Transformer-based controllers 1~</p>  <p>➤ Page 517</p>	<p>Electronic voltage controllers 1~</p>  <p>➤ Page 492</p>
---	--	---	---