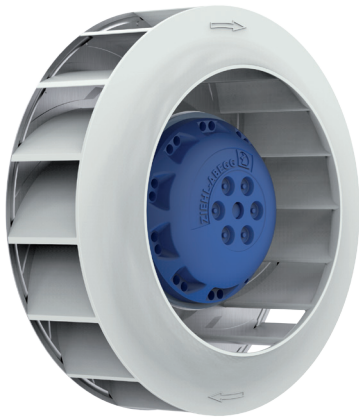


# L-series

for single phase alternating current, 2 pole

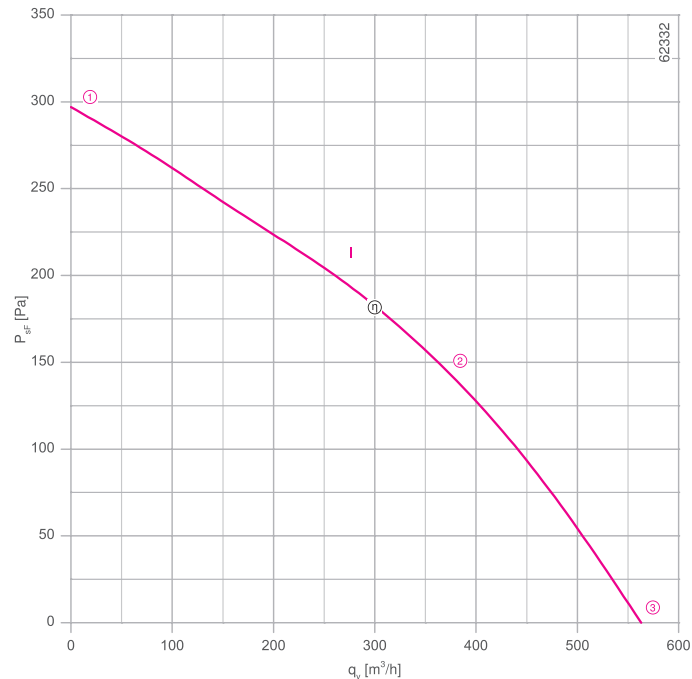
RH19L2E



## Description

Motor technology: AC  
 Rated voltage  $U_N$ : 1~ 230 V\*  
 Rated frequency  $f_N$ : 50 Hz\* (60Hz data available)  
 Motor input power  $P_1$ : 0.07 kW\*  
 Rated current  $I_N$ : 0.29 A\*  
 Rated speed  $n_N$ : 2400 min<sup>-1</sup>\*  
 Current increase  $\Delta I$ : 0 %  
 Service capacitor  $C_{400V}$ : 2.0  $\mu$ F  
 Thermal class: **THCL130**\*  
 Min. permitted ambient temperature  $t_{R(min)}$ : -30 °C  
 Max. permitted ambient temperature  $t_{R(max)}$ : 70 °C  
 Motor protection: Thermal contact  
 Impeller : High Performance Composite Material, uncoated  
 Conformity: CE  
**ErP-data**  
 Not subject to ErP regulations ( $P_1 < 125$  W)  
 \* Rated data

## Characteristic curve

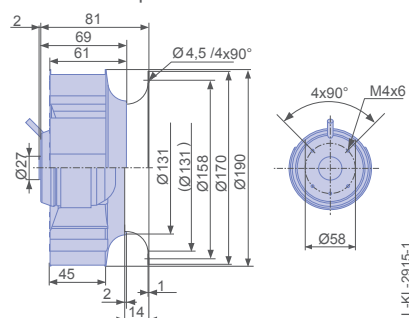


measured with inlet ring, without guard grille according to ISO 5801

- Inlet ring 00407897 Page 451
- Connection diagram 1360-177X SW Page 550
- System components Page 448

## Dimensions [mm]

Free-running motor impeller RH  
in installation position H/Vu/Vo



### Performance data

Type	Characteristic curve	Voltage	Operating point	Current	Motor input power	Speed	Suction side sound power level $L_{WA5}$ [dB]
		U [V]		I [A]	$P_1$ [W]	n [min <sup>-1</sup> ]	
RH19L-2EP.W6.1R	I	230	①	0.20	46	2810	66
		230*	②	0.29*	65*	2400*	
		230	③	0.26	60	2530	

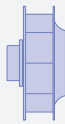
\*rated data

### Fan ordering information

Design RH\*

Installation position H/Vu/Vo





Electrical connection Supply cable variable  
45cm



**Type** RH19L-2EP.W6.1R  
**Article no.** 113035

Weight [kg] 1.40  
\* Inlet ring not included

### Control technology

<p>Frequency inverter Fcontrol 1~</p>  <p>➤ Page 478</p>	<p>Motor protection units 1~</p>  <p>➤ Page 526</p>	<p>Transformer-based controllers 1~</p>  <p>➤ Page 517</p>	<p>Electronic voltage controllers 1~</p>  <p>➤ Page 492</p>
--	---	--	--

Information

Cpro-ECblue

Vpro-ECblue

Vpro

L-series

M-series

System components

Control technology

General notes

